

MEET & GREET

EXECUTIVE COMMITTEE

PRESIDENT

Rayna Feliciano
KKCS
rayna.feliciano@kkcsworld.com



The **President** is the principal officer of the Chapter exercising general oversight of its affairs and officers. The President plans and chairs all board meetings, serves as the Chapter's spokesperson in the community, oversees and mentors board members, and implements the Chapter's strategic plan and budget. The President also chairs and serves on the Executive Committee.

PRESIDENT-ELECT

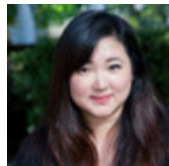
Christine Timbre
Pankow Builders
ctimbre@pankow.com



The **President-Elect** assists the President in carrying out the functions of the office, including presiding over meetings of the Chapter and the Board of Directors in the President's absence. The President-Elect also participates on The LEONARDO program sub-committee, chairs the Nominations and Elections committee, and serves as an ex-officio member of all standing committees.

PAST PRESIDENT

Suria Lee
KOA Corporation
slee@koacorp.com



The **Past President** remains on the Board of Directors in the capacity of an advisor and provides continuity to the new Board of Directors. The Past President also assists with mentoring board members and fills in for the President and President-Elect in their absence.

SECRETARY

Shaunagh O'Connor
Wiss Janney Elstner Associates
soconnor@wje.com



The **Secretary** works in collaboration with the Board of Directors to record monthly meeting minutes and is responsible for coordinating the monthly board meeting venues, collecting board member reports, distributing meeting minutes, and sending out meeting reminders and times.

TREASURER

Damion Morris
Vanir Construction Management
damion.morris@vanir.com



The **Treasurer** participates in the development of the annual budget, oversees the financial integrity of the Chapter, assures the production of financial reports and annual audits, serves as the chairperson of the financial committee, and performs all duties incident to the office of the Treasurer.

SMPS/LA IS LOOKING FOR VOLUNTEERS!

Meet and Greet with our Committee Chairs and see which committees interest you!

advocate. educate. connect.

www.smps-la.org



GET INVOLVED TODAY!

COMMITTEE OVERVIEW

PROGRAMS

Matthew Sullivan
Programs Director
fl_matthew@outlook.com



SMPS/LA hosts a number of events a year including market sector roundtables, client panels, and construction tours. The **Programs Committee** organizes these events and is responsible for developing topics, securing speakers, and venue coordination.

EDUCATION

Cindy Ionita
Education Chair
SWA Architects
cindy.ionita@swaarch.com



The **Education Committee** is responsible for planning and organizing chapter educational seminars. This includes contacting and procuring appropriate speakers, developing relevant topics, identifying program goals, and venue coordination.

PROFESSIONAL DEVELOPMENT

Fawn Radmanich
Professional Development Director
PCL Construction
fradmanich@pcl.com



The **Professional Development Committee** is responsible for coordinating the Mentorship, Certified Professional Services Marketer (CPSM), and Student Outreach programs. Each of these sub-committees focuses on the professional development of Chapter members in different stages of their career.

COMMUNICATIONS

Communications Co-Directors

emiliy.marino@kpff.com
sroberts@citadelcpm.com

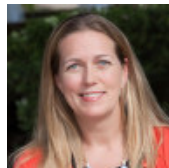


Emily Marino KPFF Sarah Roberts Citadel CPM

Communication is central to everything our Chapter does and the Communications Committee serves all of the other committees in marketing communications and promotion of event announcements through email blasts to our members while ensuring timely delivery of information via website updates, social media, and our quarterly newsletter.

SPECIAL EVENTS

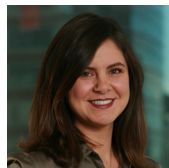
Kristi Sprinkel
Special Events Director
Gensler
kristi_sprinkel@gensler.com



The **Special Events Committee** is responsible for planning, coordinating, and facilitating the Chapter's networking happy hours and annual events such as The LEONARDO and Marketing Communications Awards Gala.

MEMBERSHIP

Michelle Martini
Membership Director
AC Martin
michelle.martini@acmartin.com



The **Membership Committee** serves as the ambassador to welcome new and potential members and is responsible for initiatives related to new member recruitment and member retention. This includes the planning and organizing of bi-annual new member events and member recognition programs.

SPONSORSHIP

JoAnne De Guzman
Sponsorship Director
Henderson Engineers
joanne.deguzman@hei-eng.com



The **Sponsorship Committee** is focused on procuring sponsors and strategic partners for educational seminars, programs, construction tours, special events, as well as various annual and in-kind sponsorships.



**Society for Marketing
Professional Services
Los Angeles**